

# SPACERS

*For small-pin, 7/8" diameter cabinet locks*

## SPECIFICATIONS

**Material:** White plastic

**Function:** To space the lock farther into the cabinet so that the lock face is flush with the face of the cabinet.

**Thickness sizes:**

WP20 = 3/16"

WP21 = 3/32"

WP22 = 1/4"

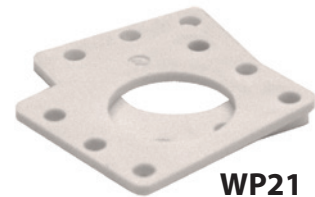
WP23 = 1/2"

WP24 = 1/8"

*For use with: 100, 200, 500, 600, L20V, N078 and R078*



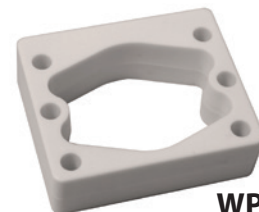
**WP20**  
3/16" thickness



**WP21**  
3/32" thickness

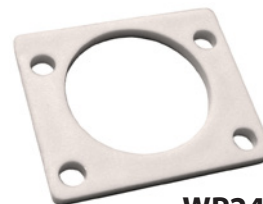


**WP22**  
1/4" thickness



**WP23**  
1/2" thickness

*For use with: 996, 997, 998 and 999*



**WP24**  
1/8" thickness

*See back for product dimensions.*



**OLYMPUS<sup>®</sup>**  
**LOCK**  
INC

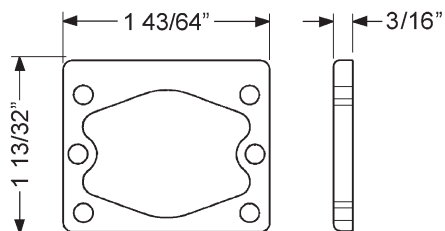
# SPACERS

For small-pin, 7/8" diameter cabinet locks

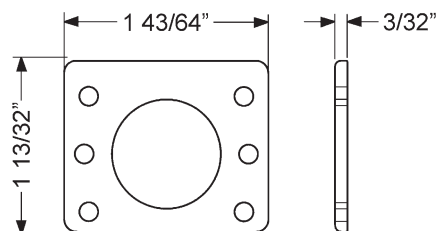
## DIMENSIONS

For use with: 100, 200, 500, 600, L20V, N078 and R078

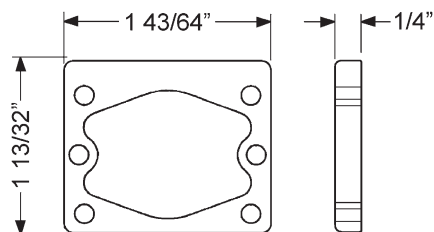
WP20



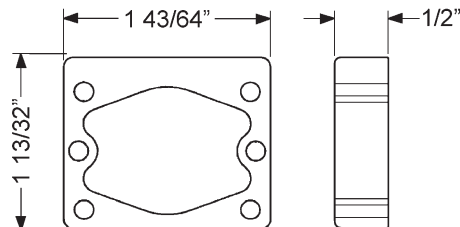
WP21



WP22



WP23



---

For use with: 996, 997, 998 and 999

WP24

